

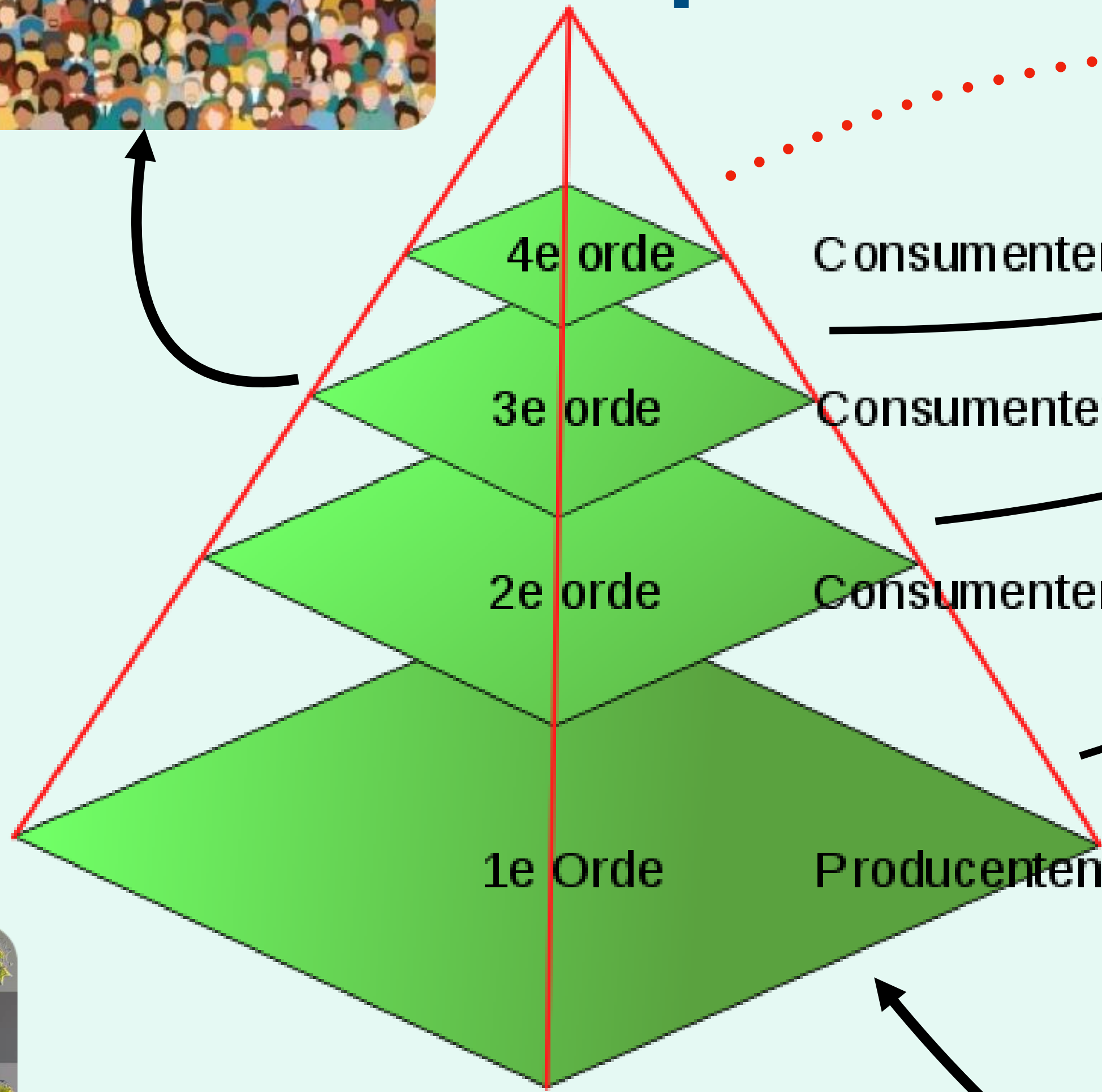
# De hele voedselketen onder één dak: hoe zet je dat op?

D



# selpiramide

?



Consumenten 3e orde

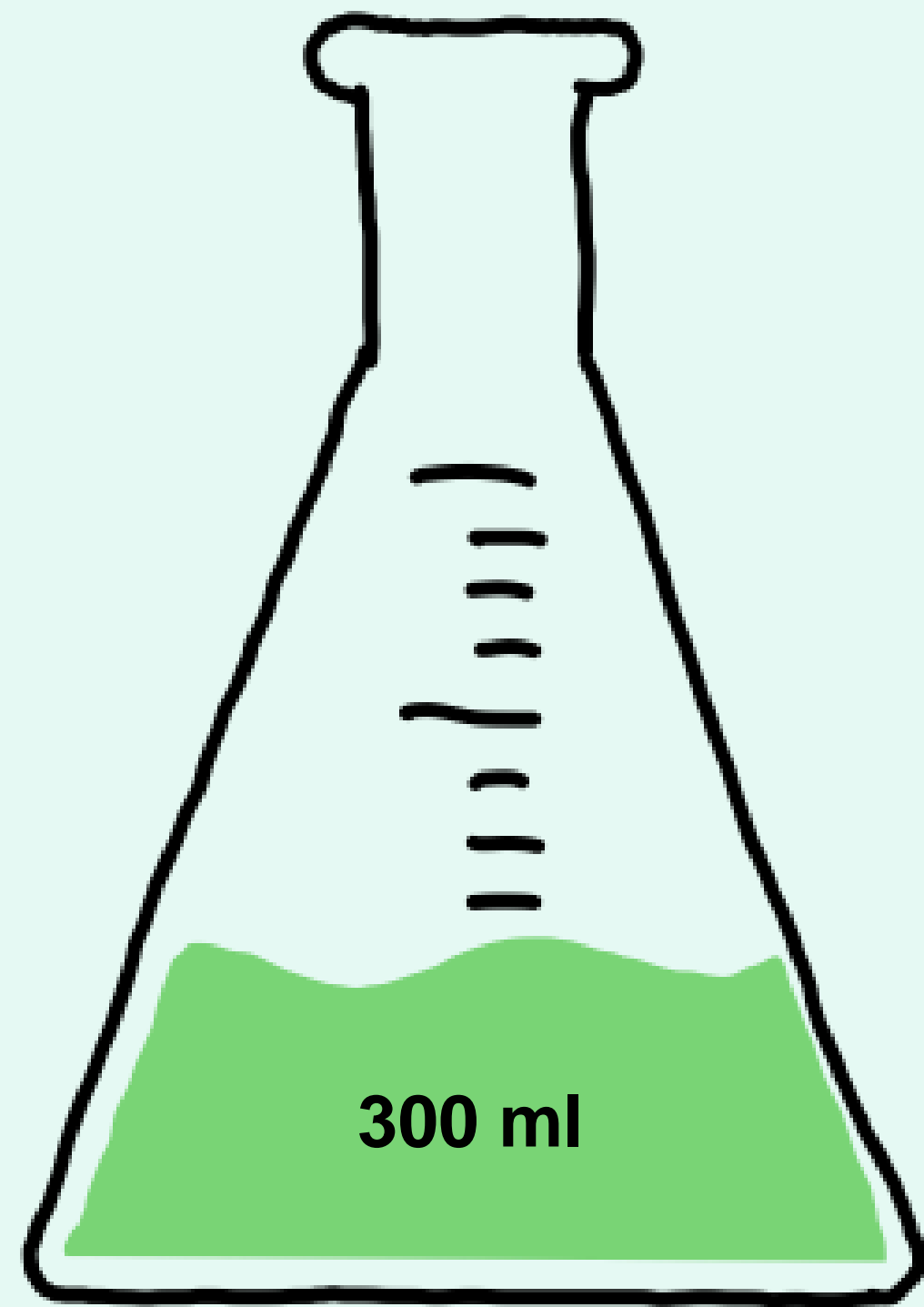
Consumenten 2e orde

Consumenten 1e orde

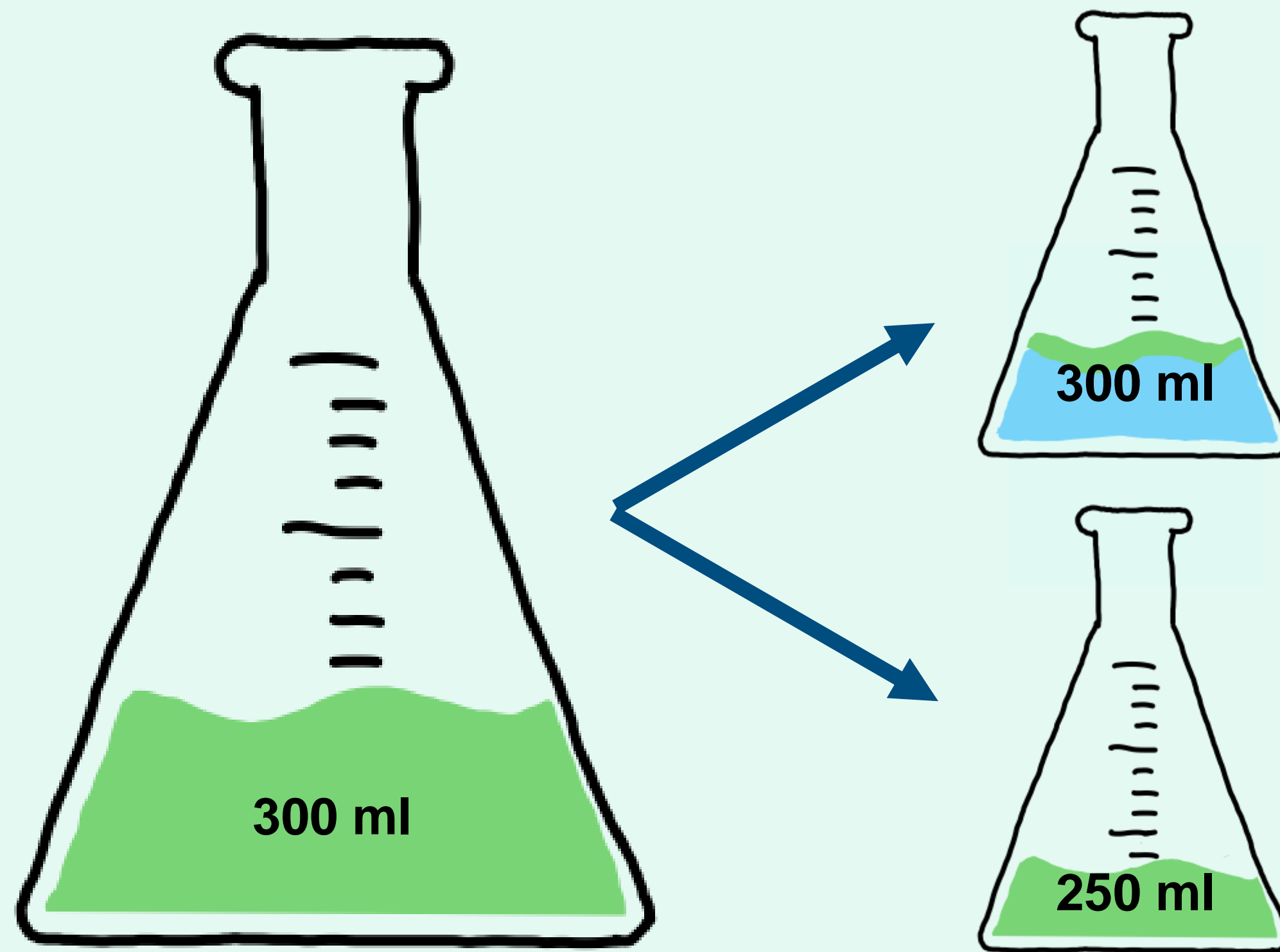
Reducenten

F2-medium, Licht & CO<sub>2</sub>

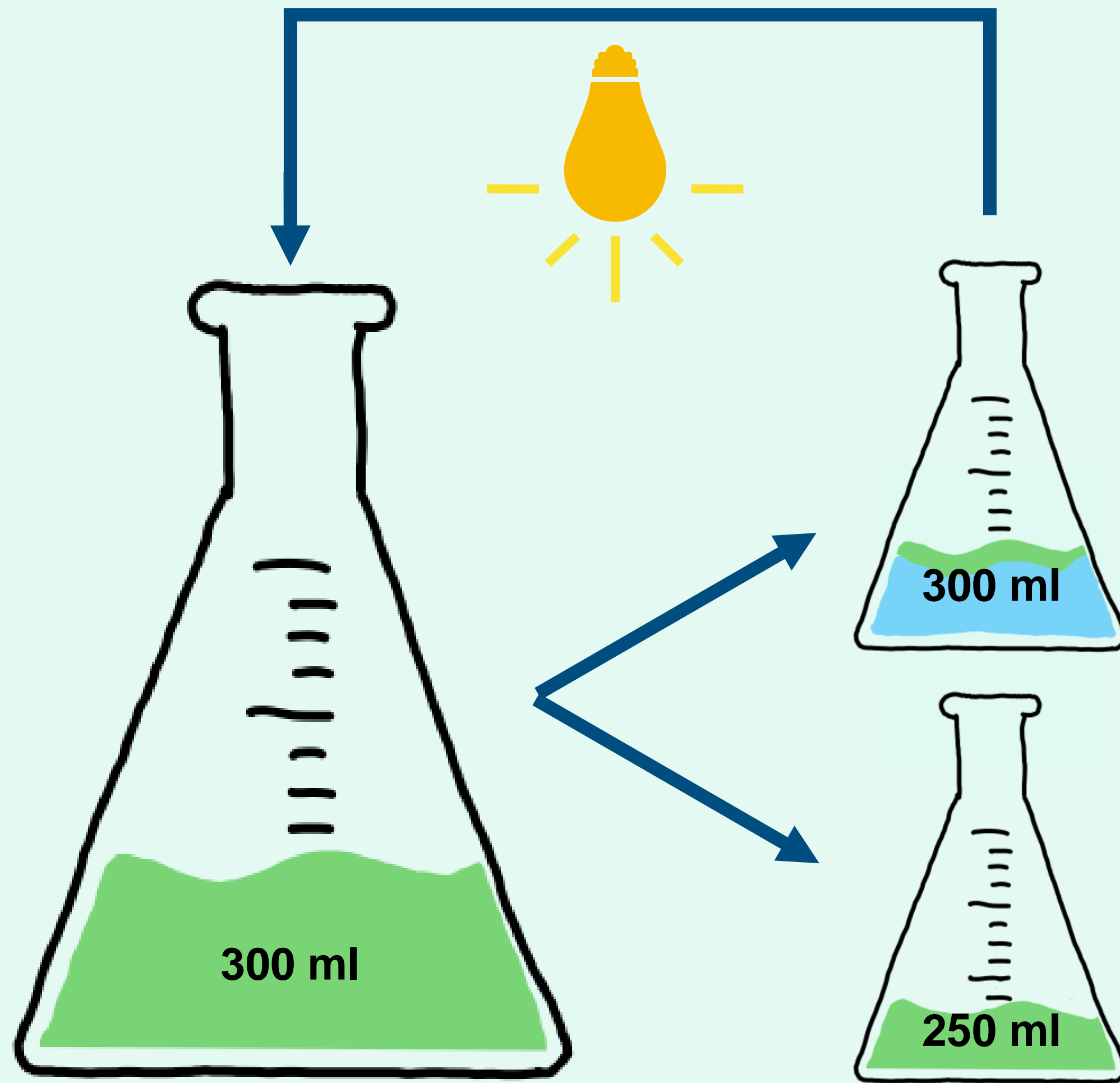
# De start van onze voedselketen



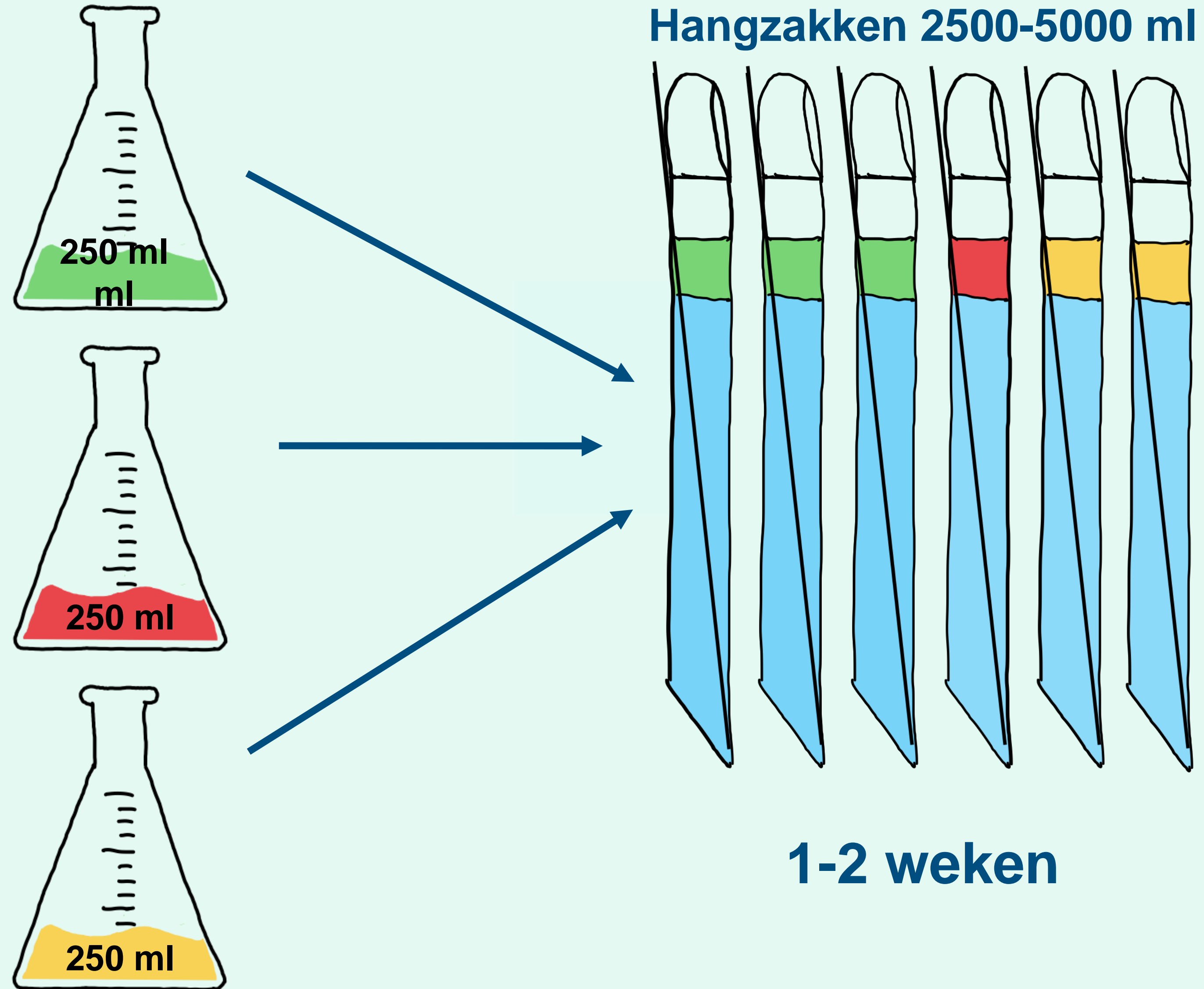
# De steriele kweek



2 weken

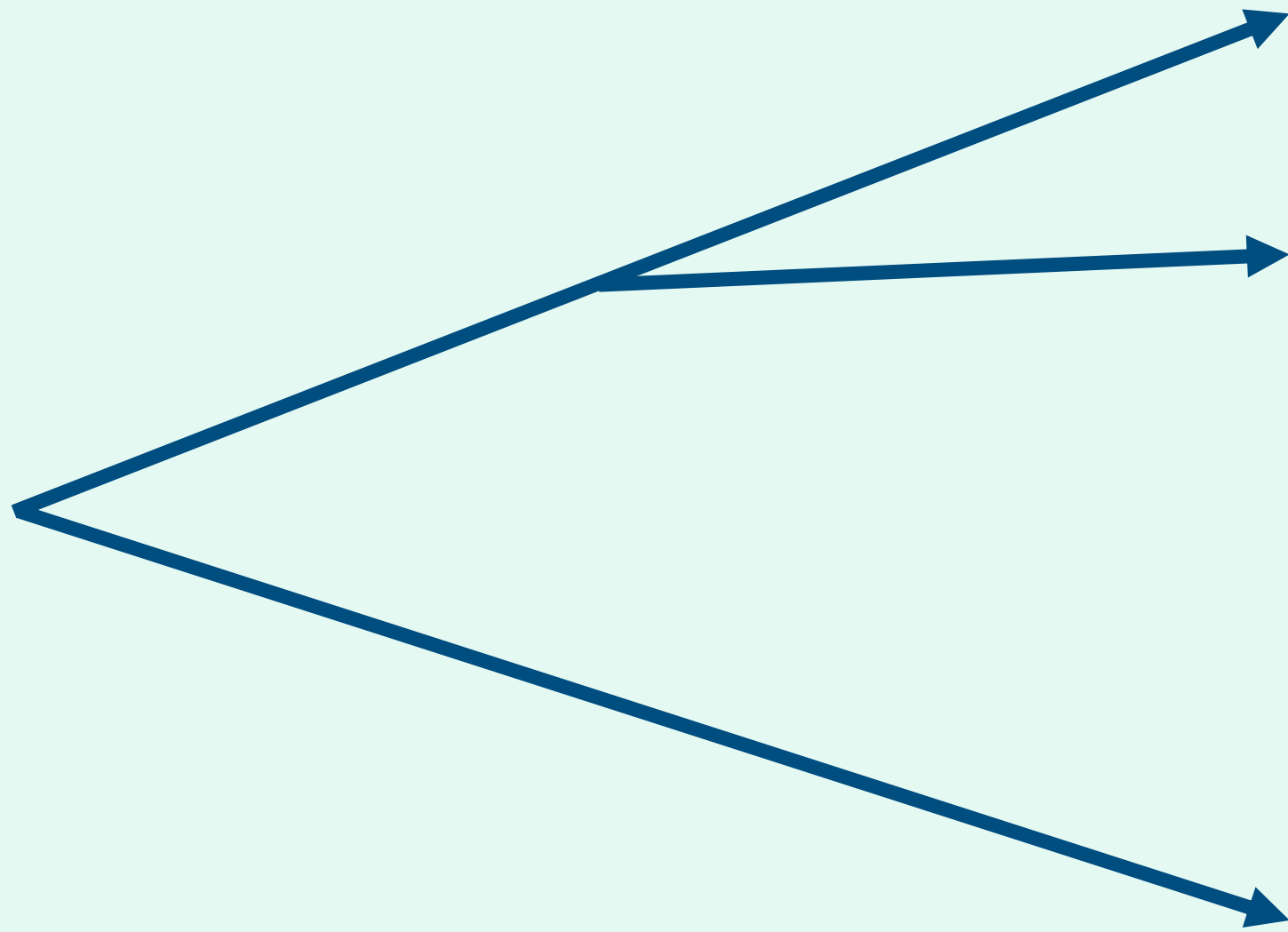
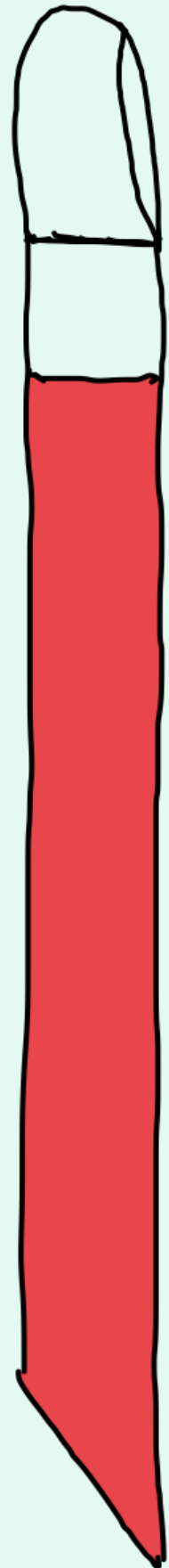


# Opschalen

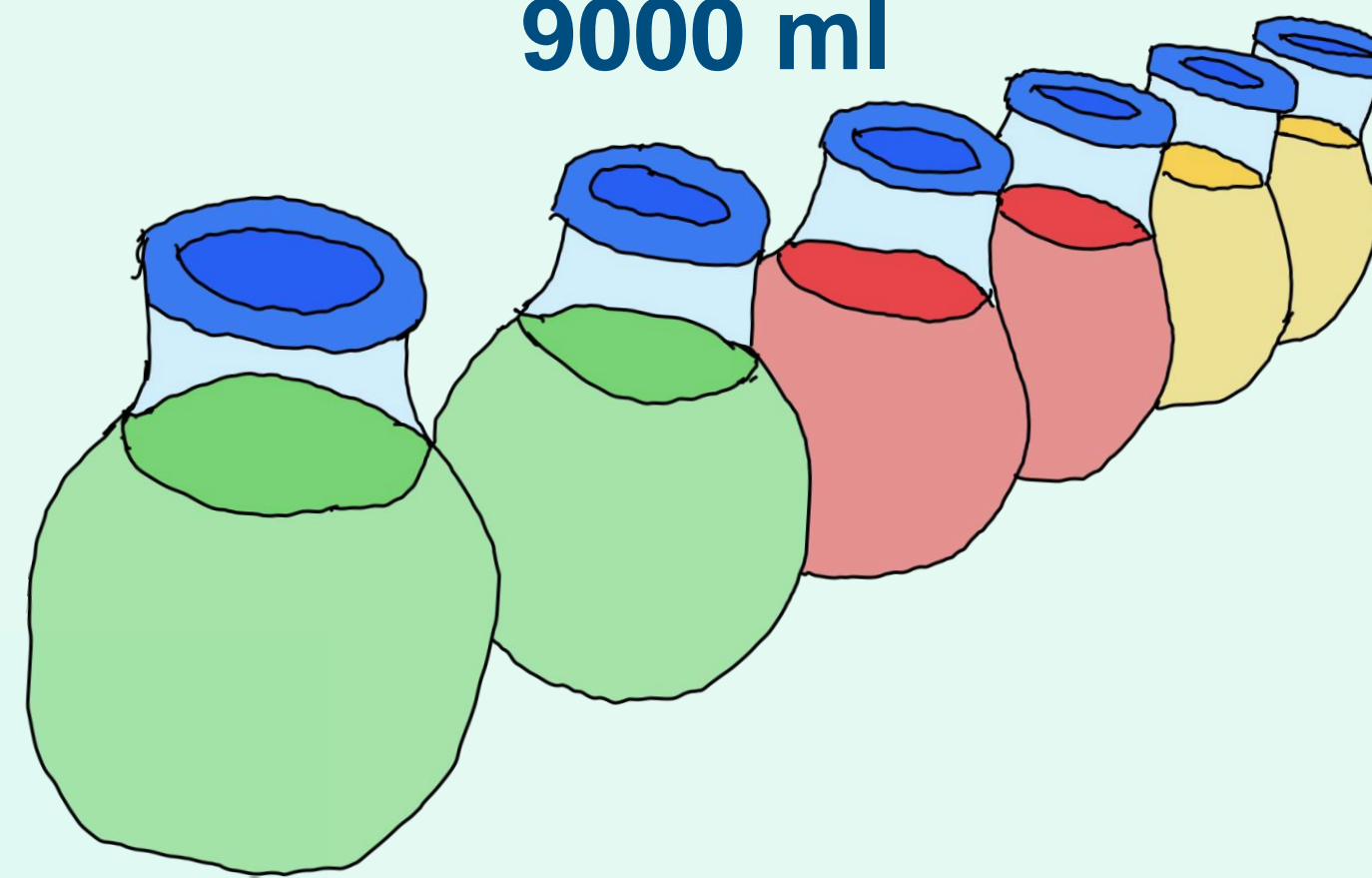


# Verder opkweken

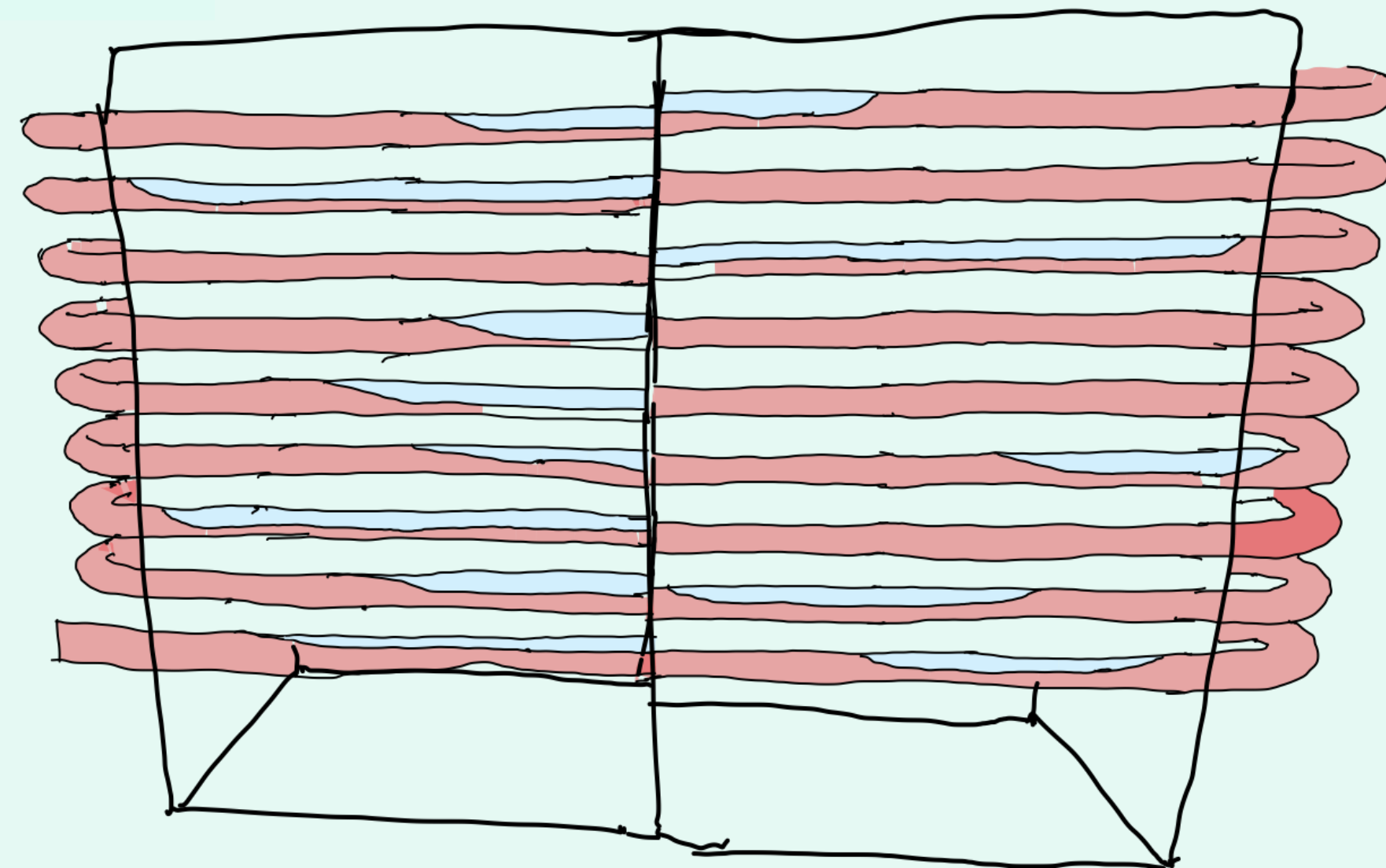
2500 ml



9000 ml



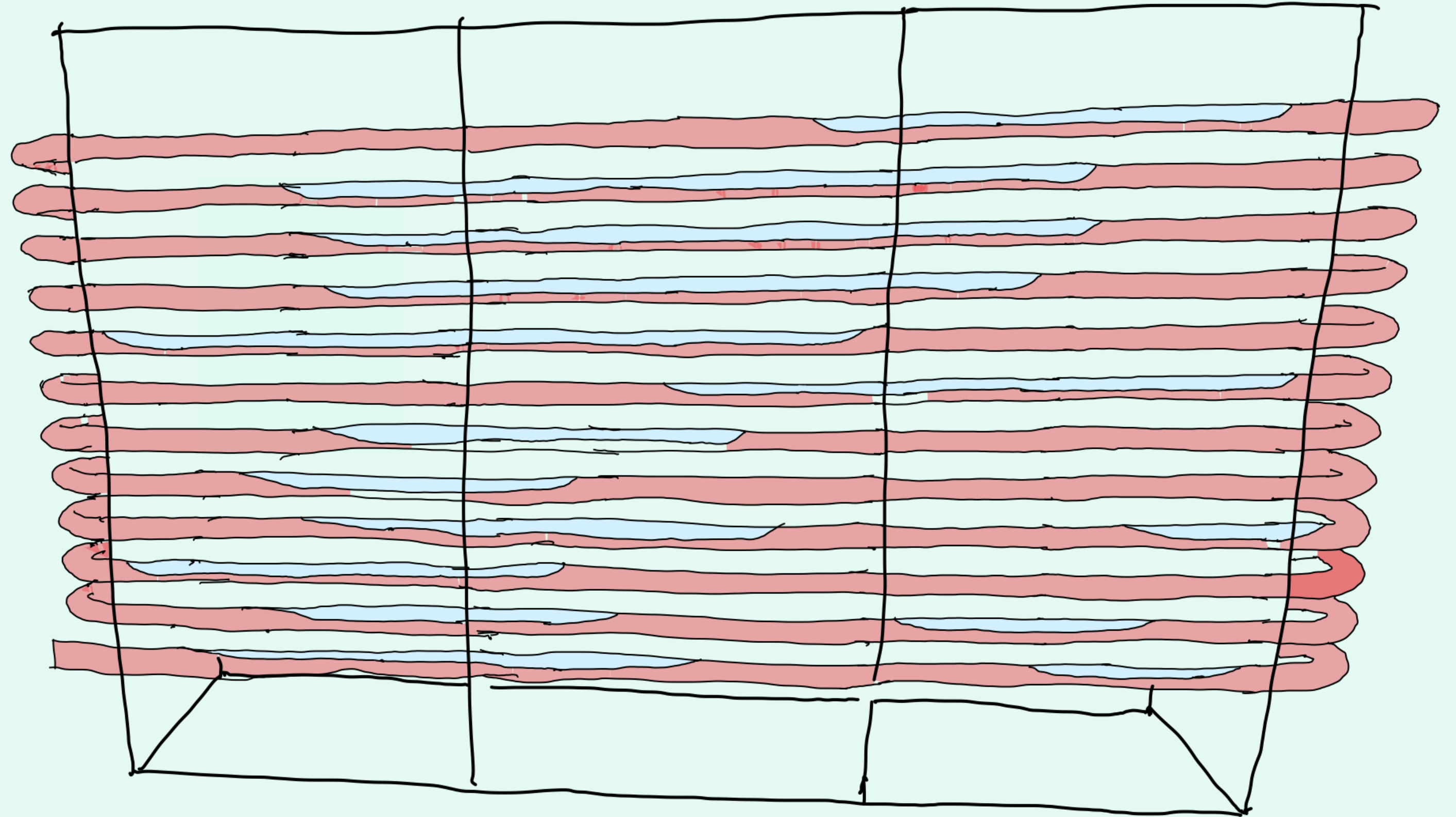
20000 ml



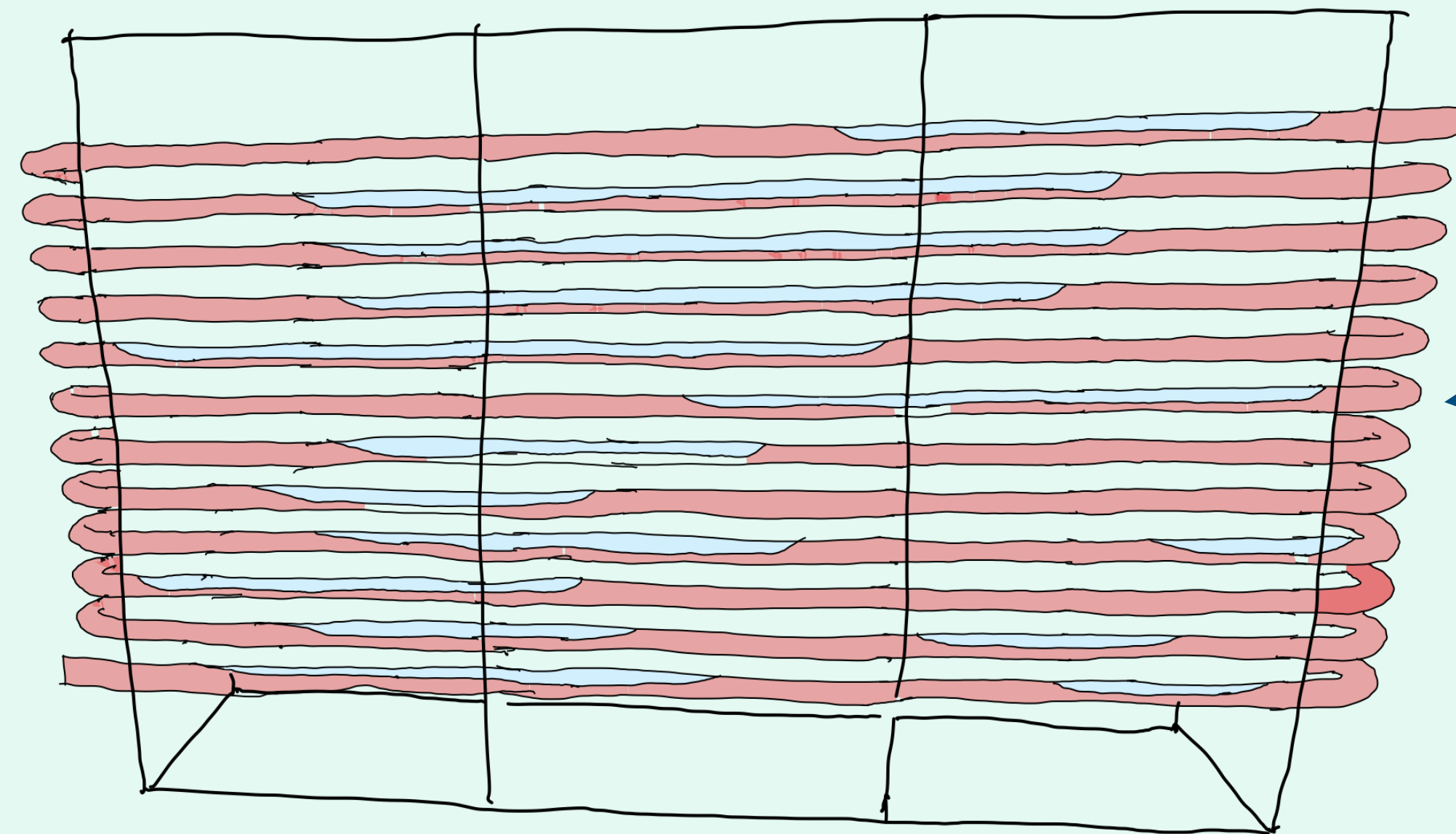
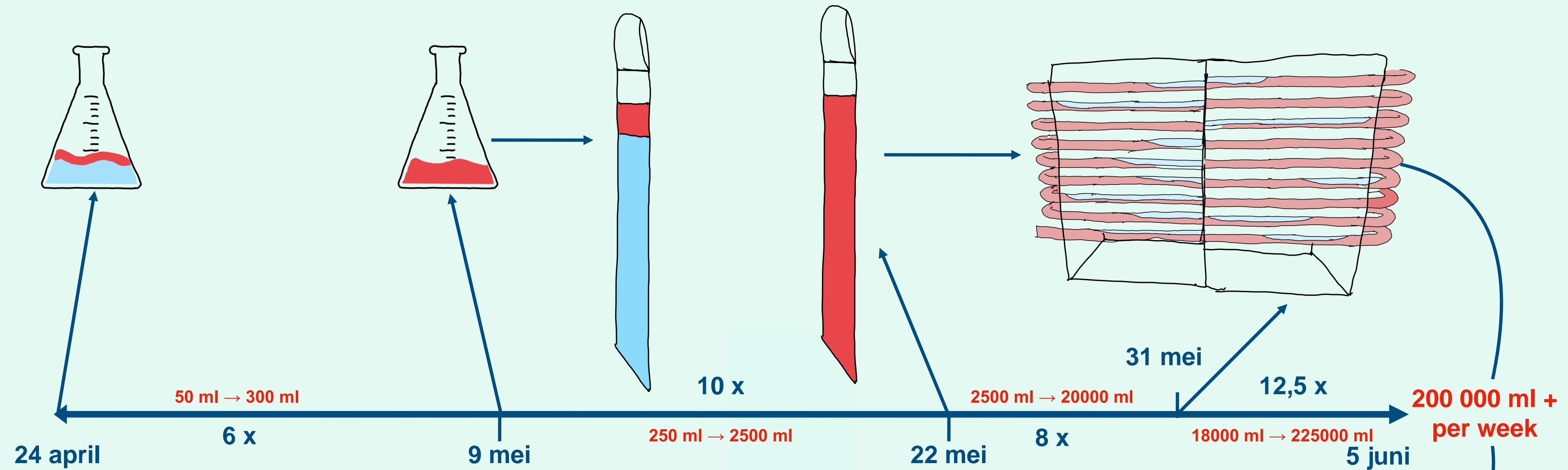
# Algen bioreactoren

- 2 x 20 L versie
- 200 L versie
  - extra toevoeging van CO<sub>2</sub>

Continue productie

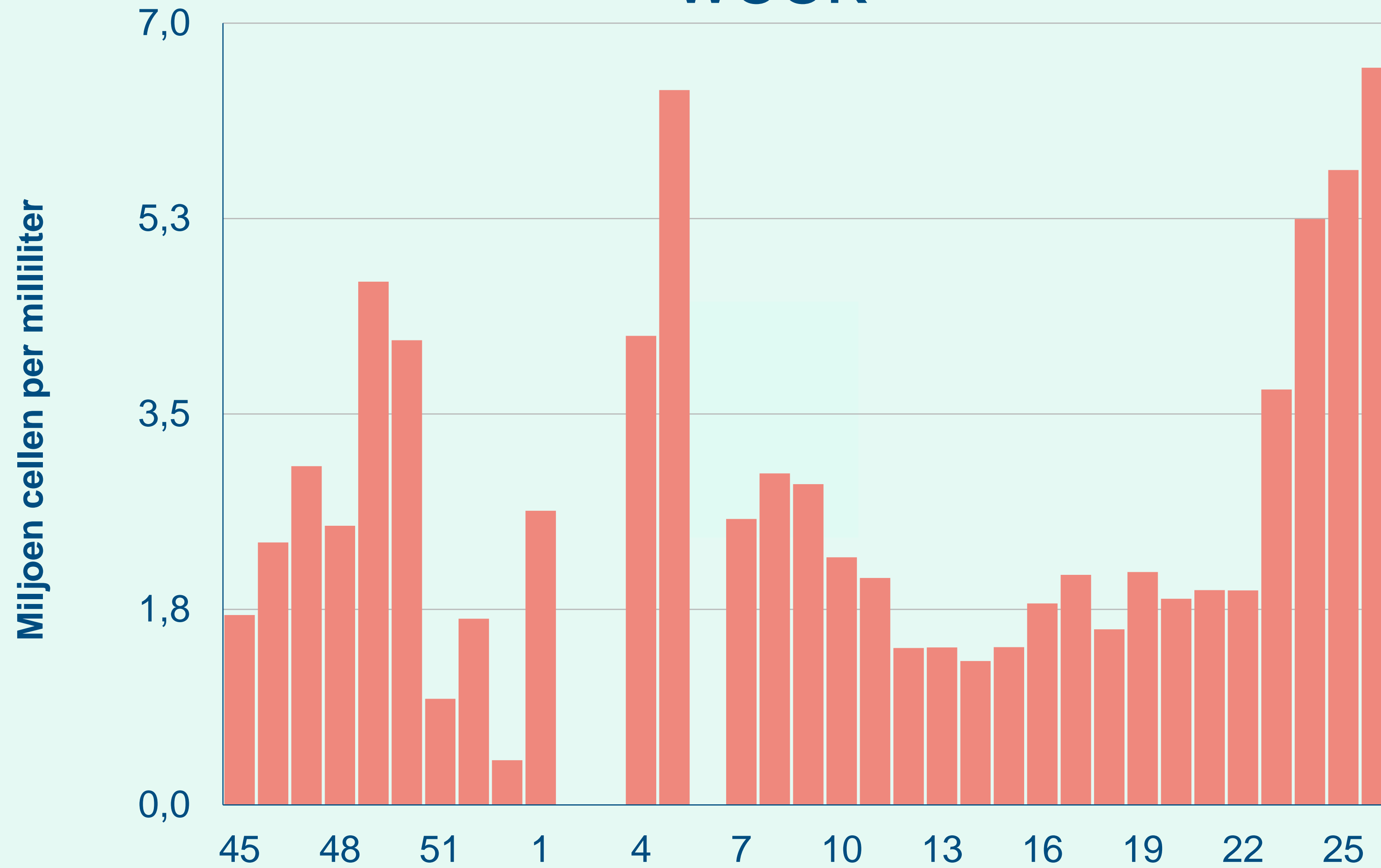




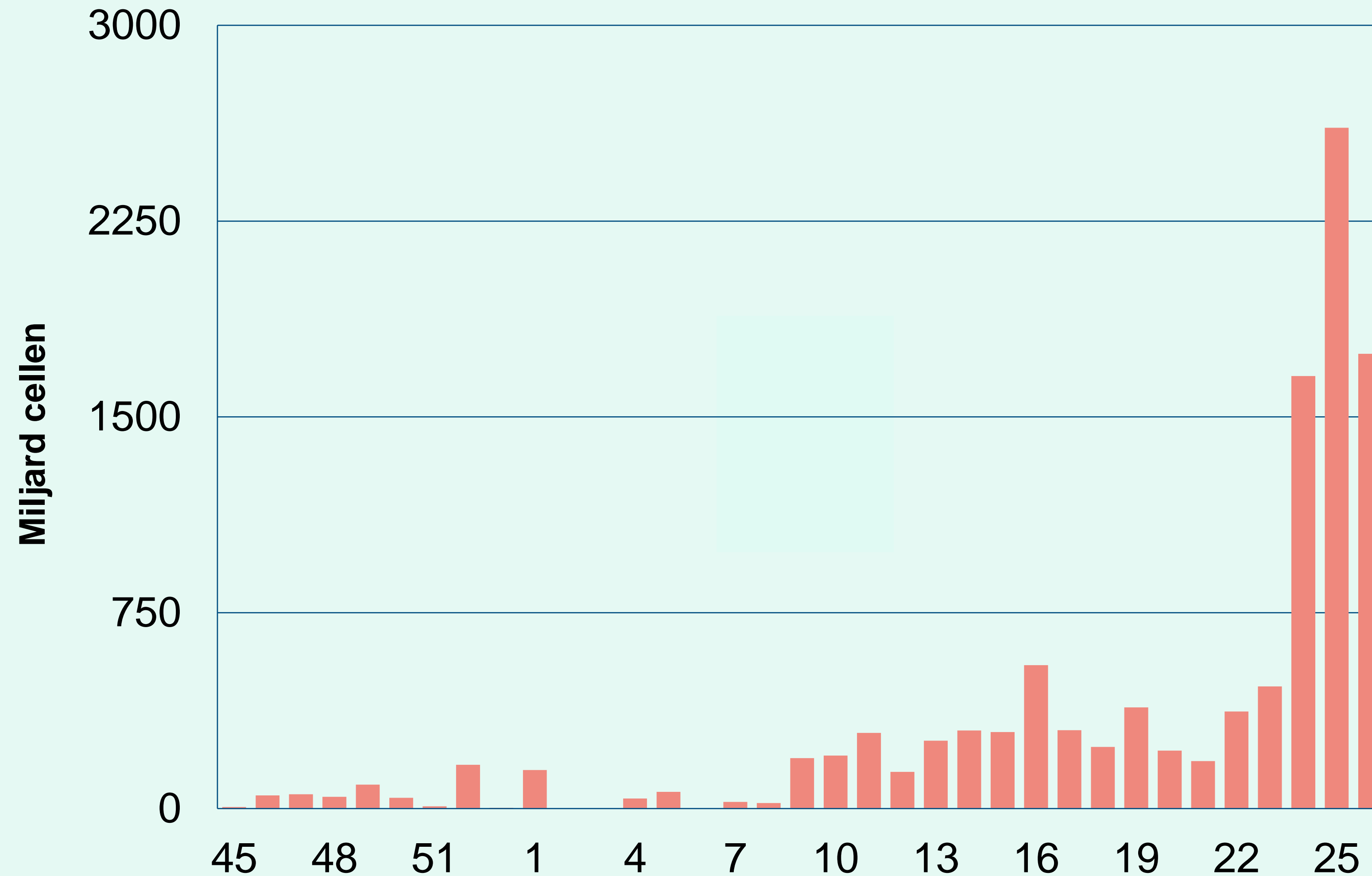


Opschaling van 4000x  
in 6 weken

# Gemiddelde dichtheid *R. salina* cellen geoogst per week



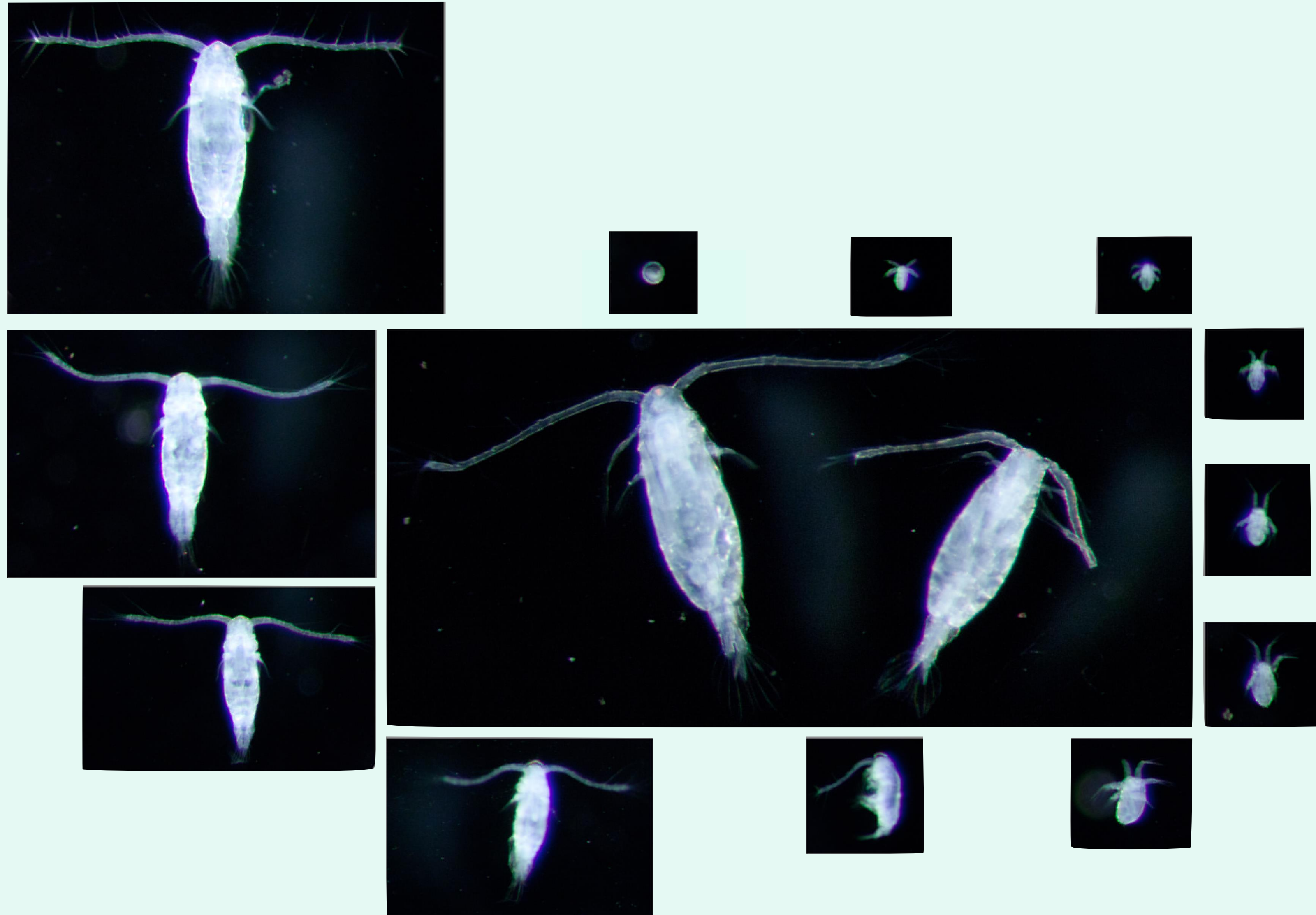
# Totaal aantal *R. salina* cellen geoogst per week



# Consumenten 1e orde: *Acartia tonsa*



# Voordelen van Copepoden



# Beweging stimuleert jachtgedrag



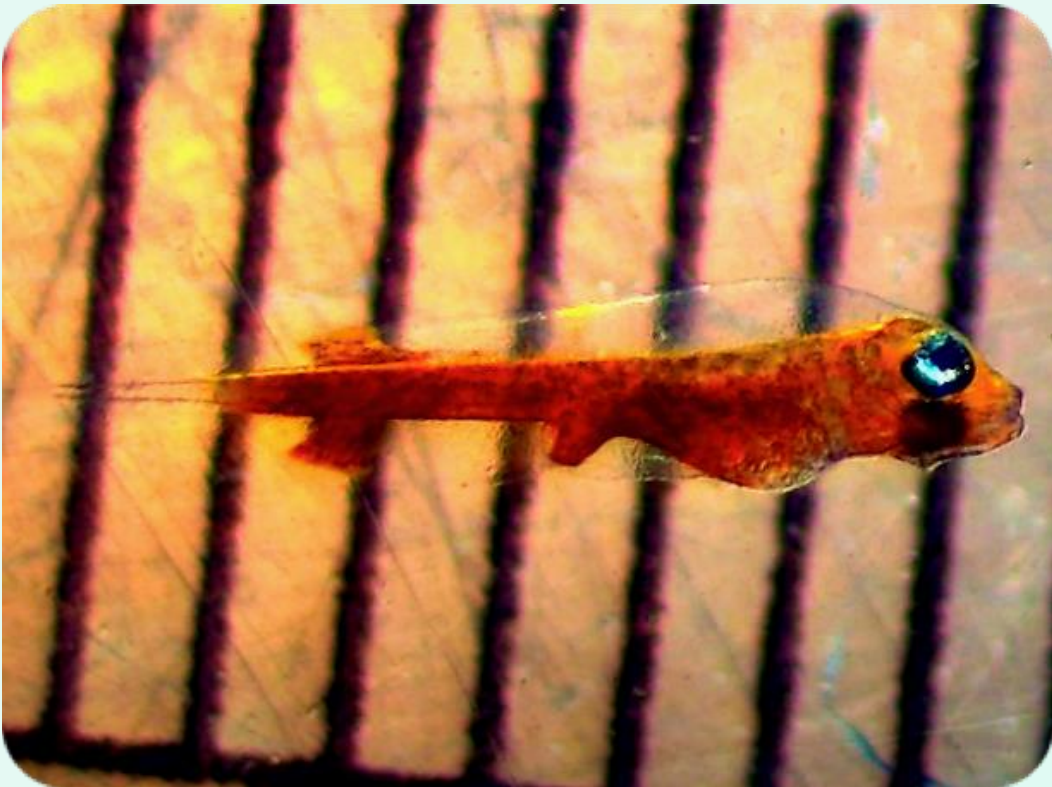
# Tarbot net uit het ei



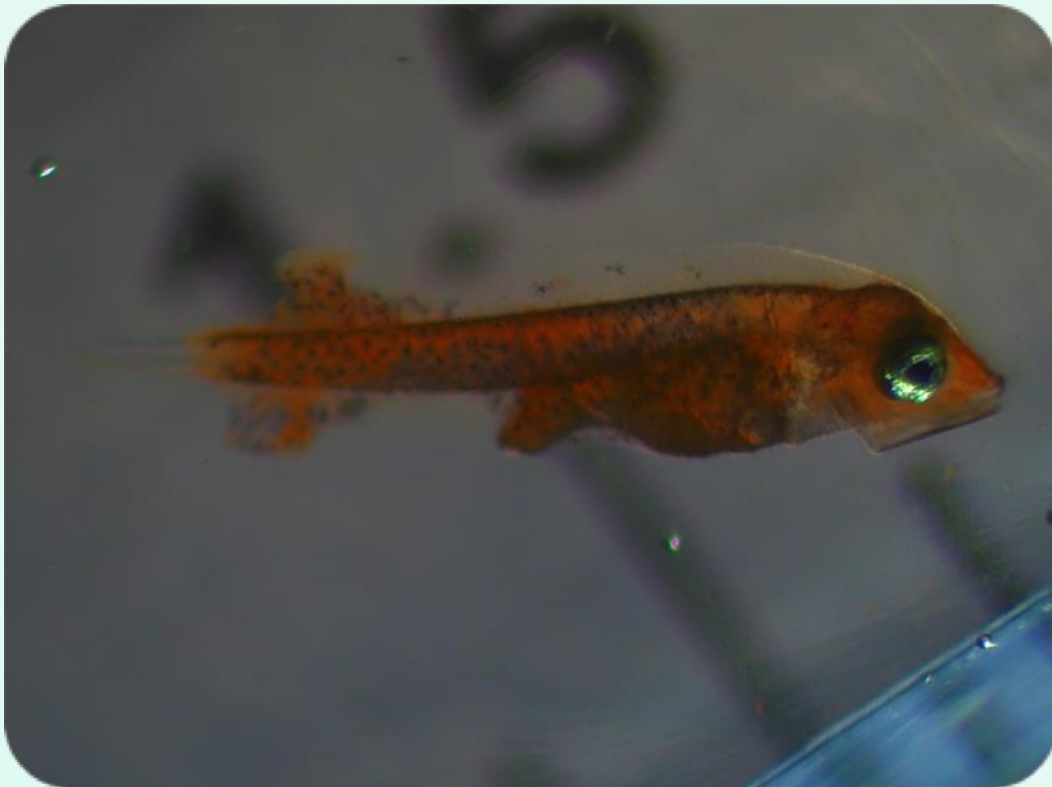
# Ontwikkeling van de vislarven



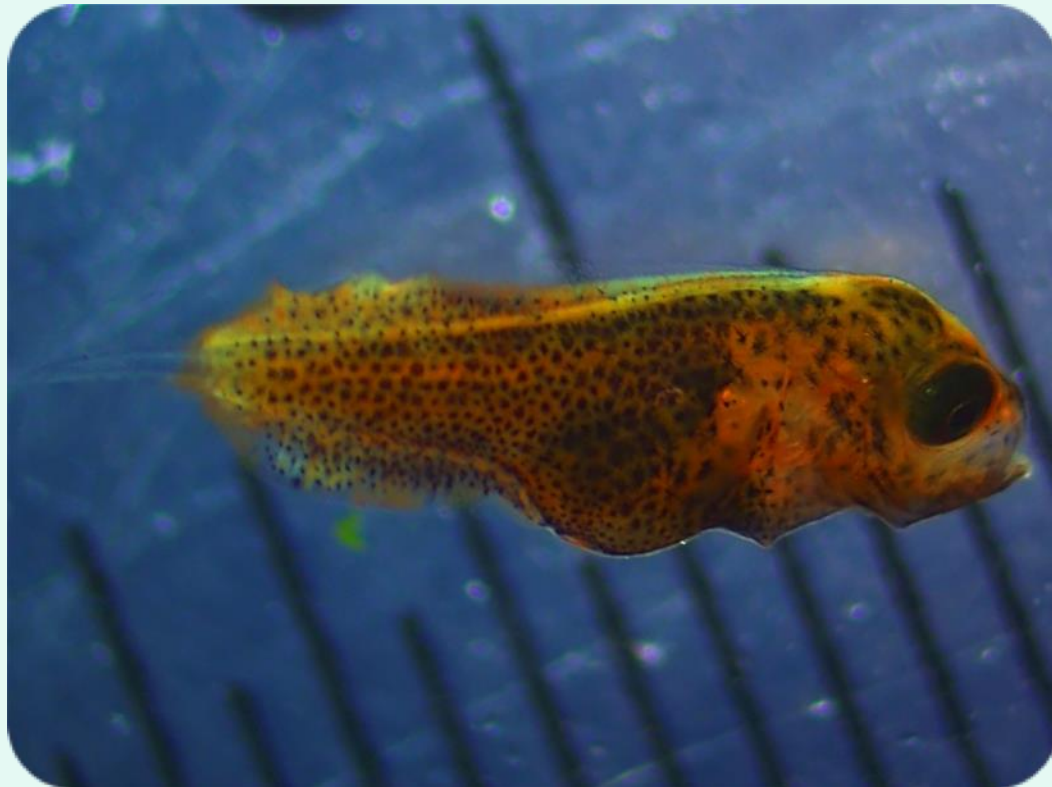
1



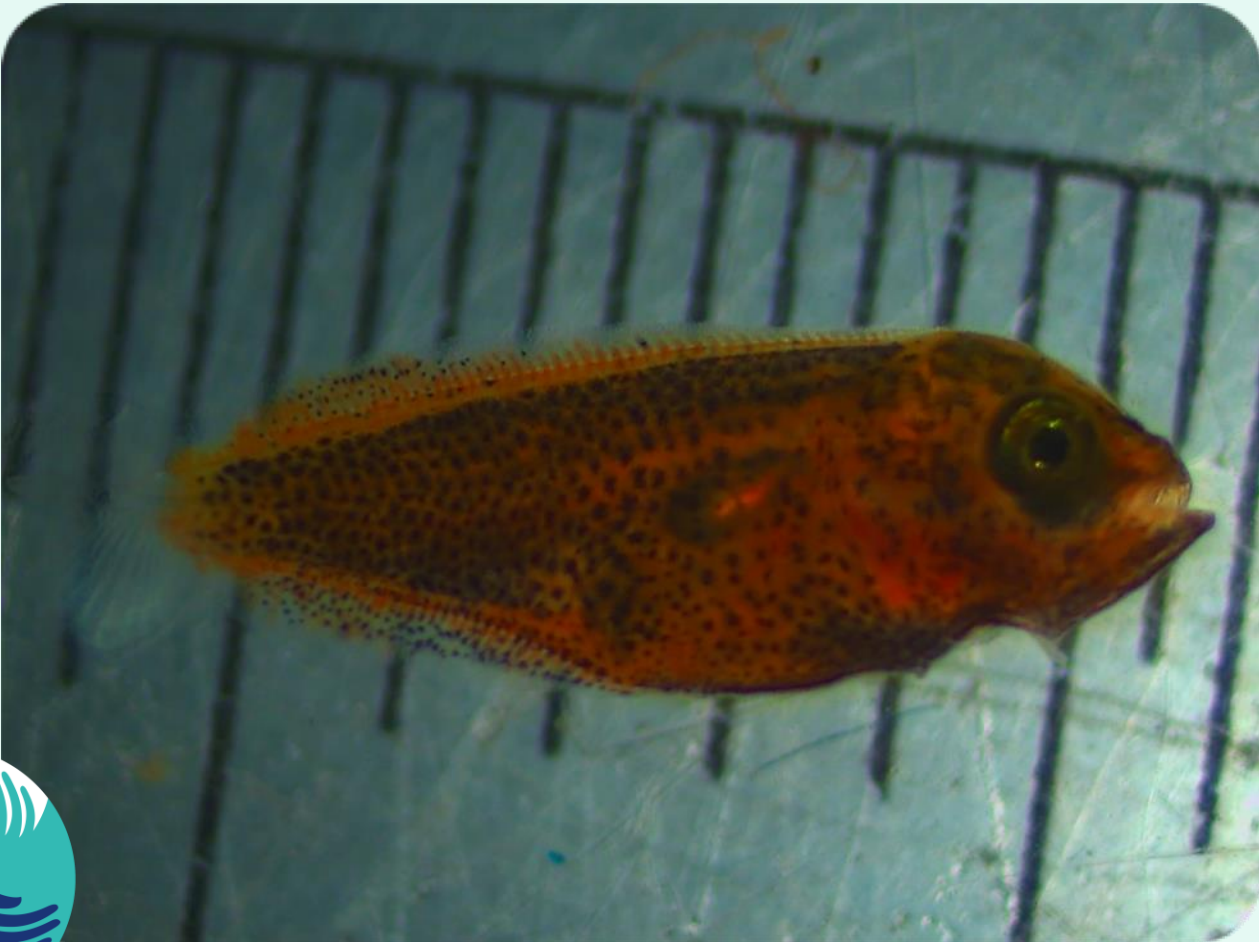
3



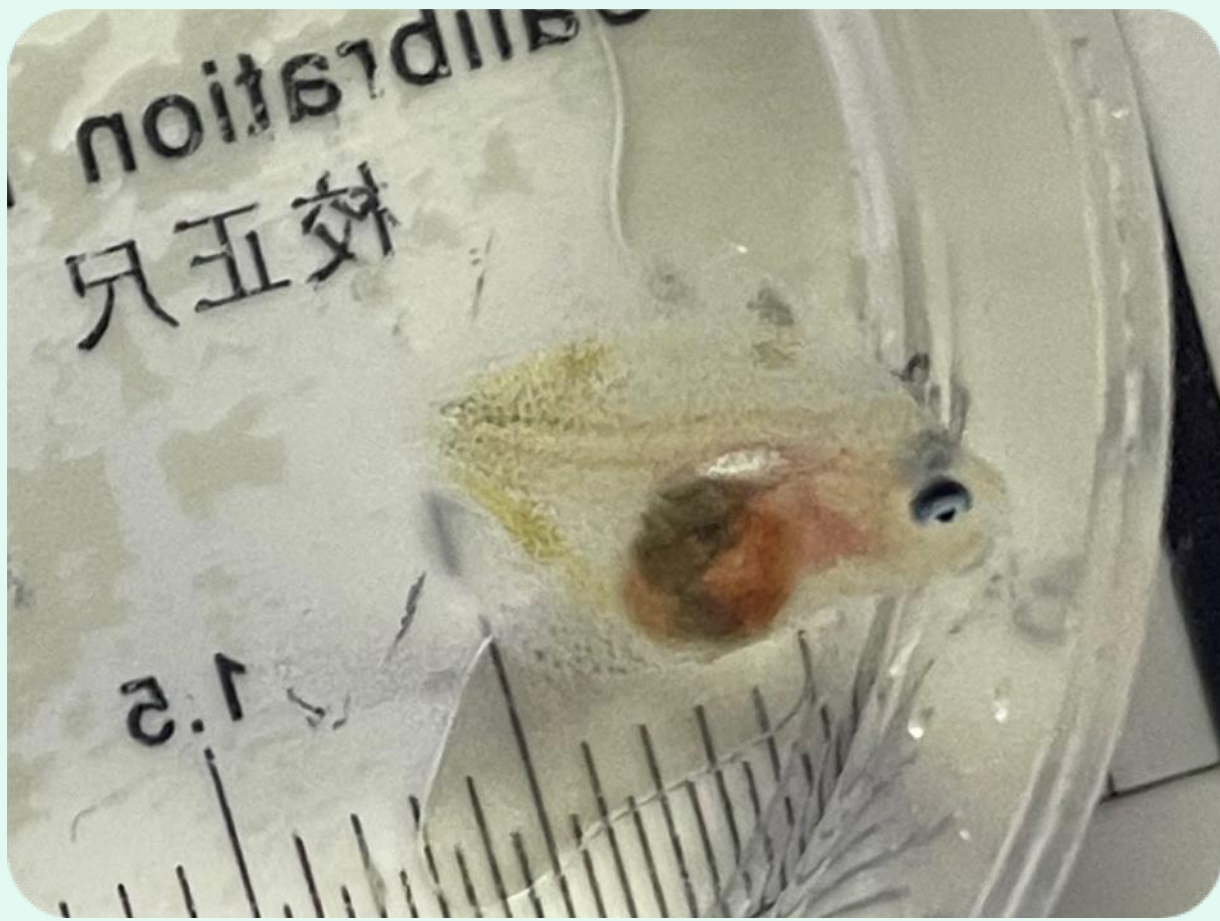
6



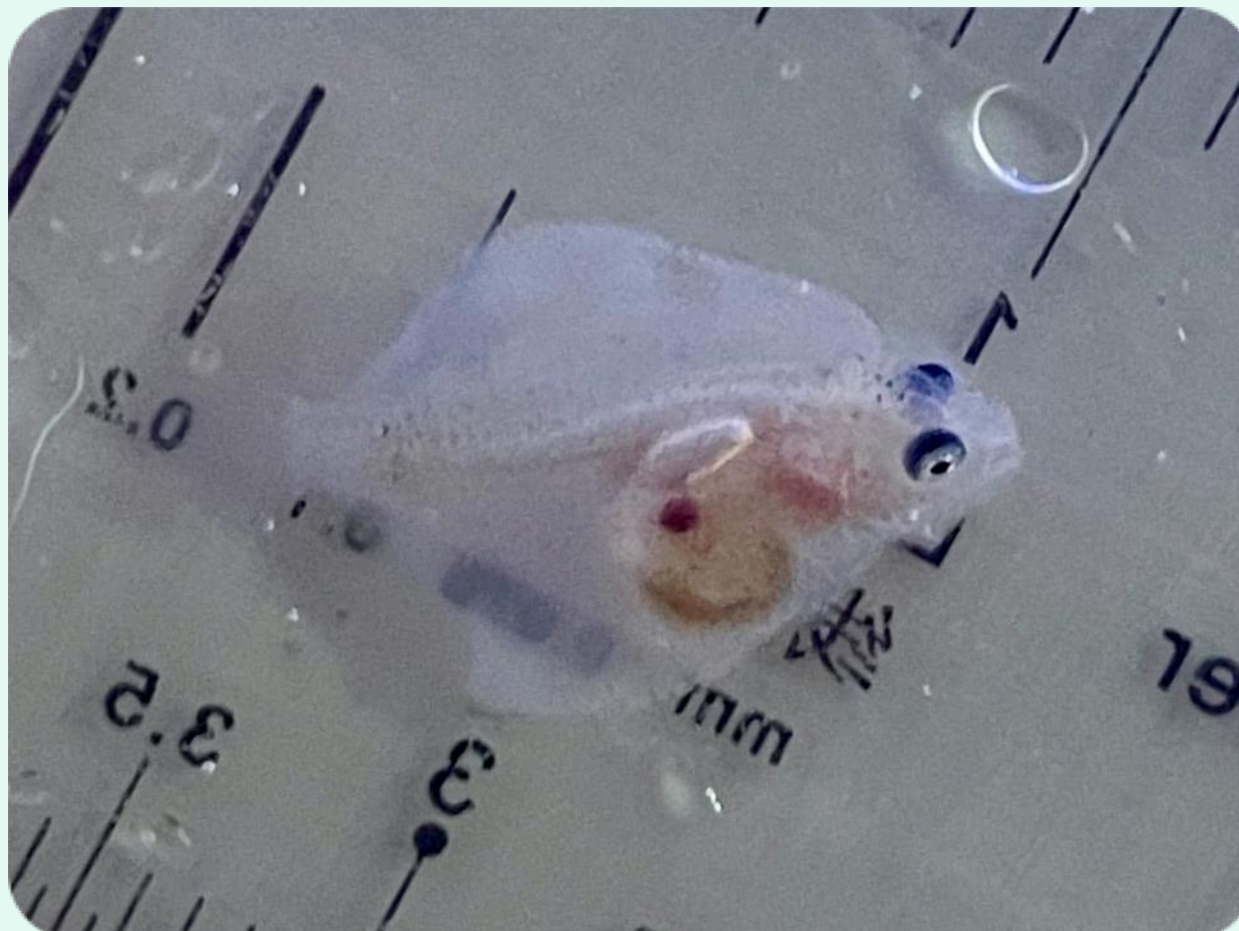
13



16



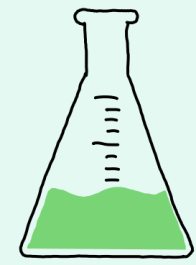
22



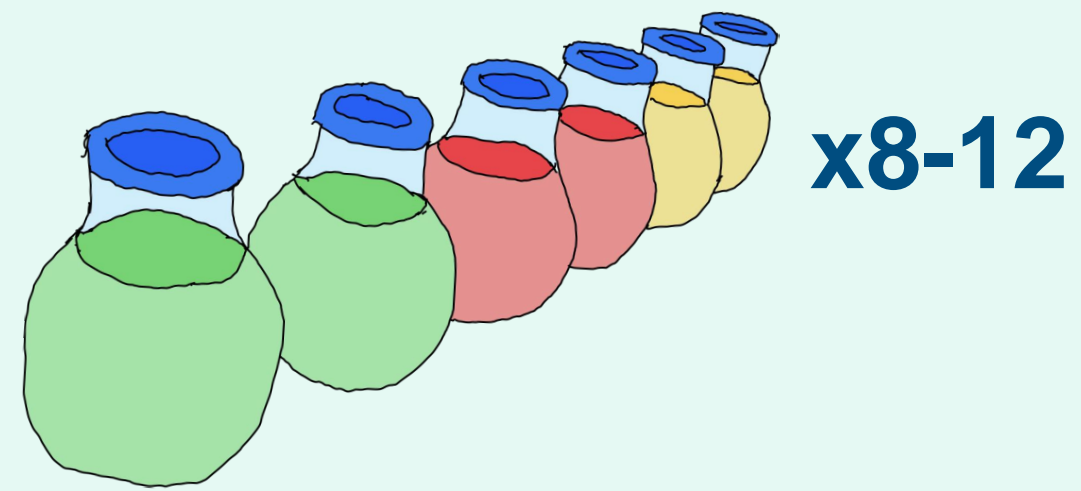
28



# Kweekcentrum BlueLinked



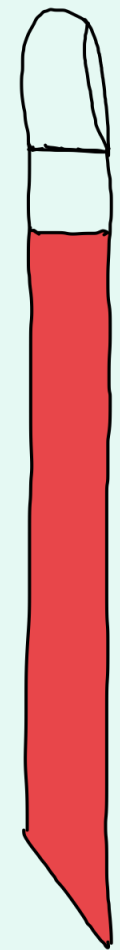
x24



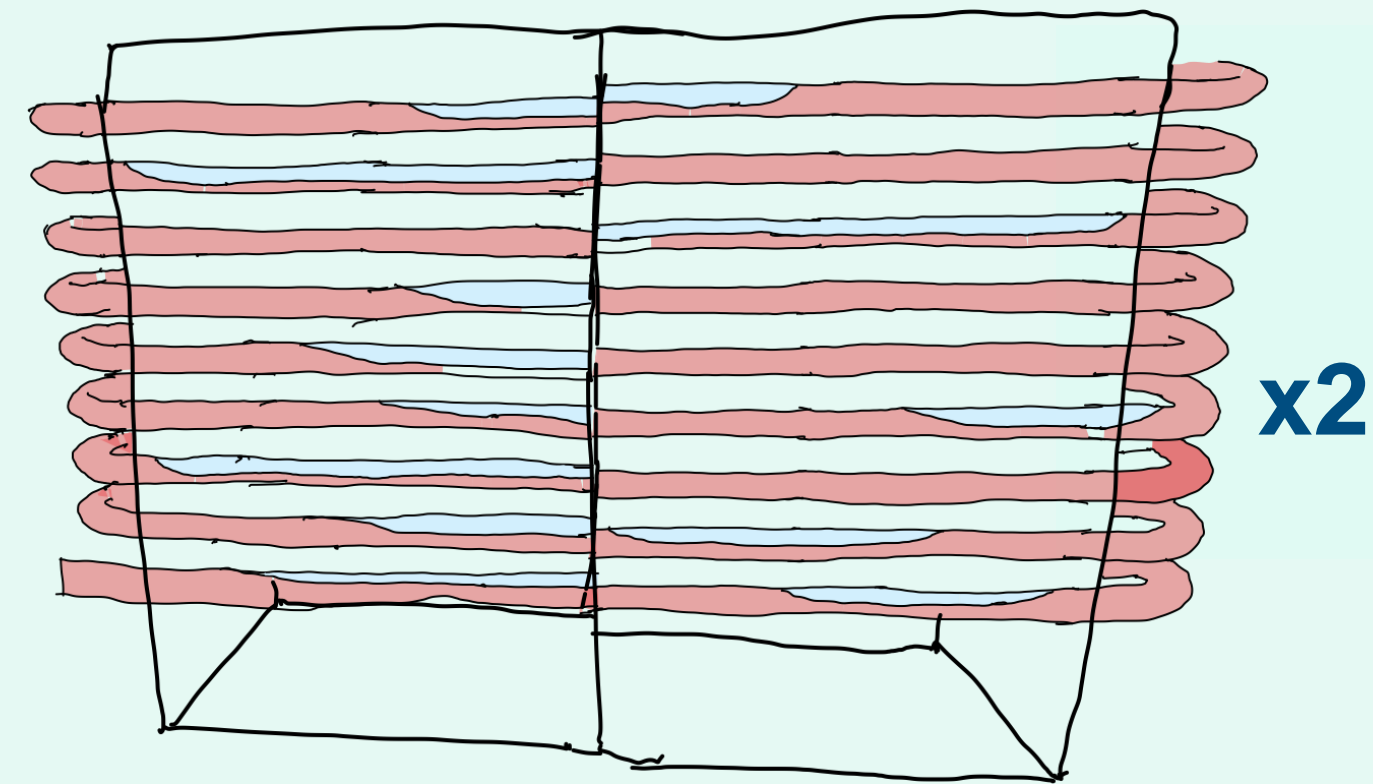
x8-12



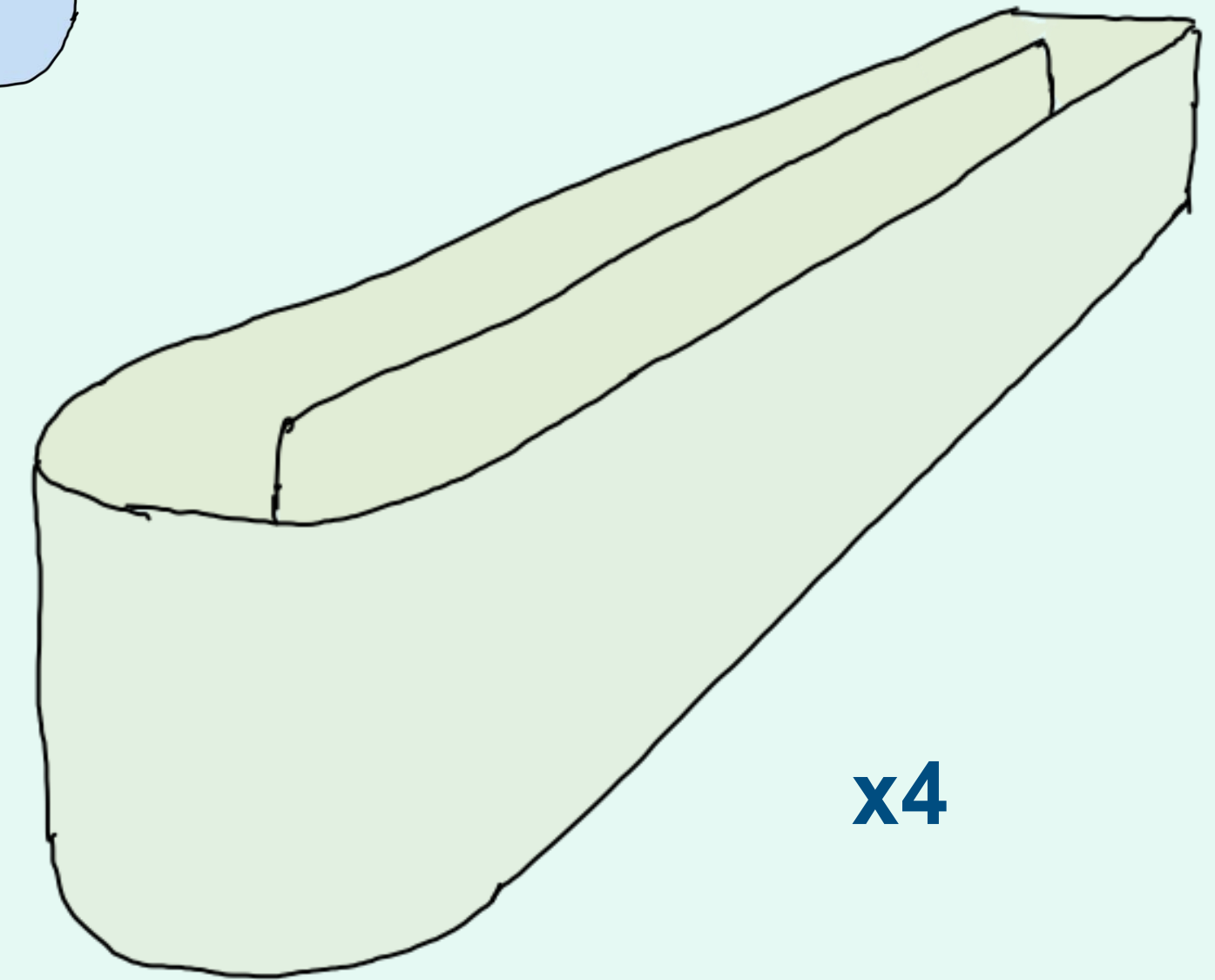
x5



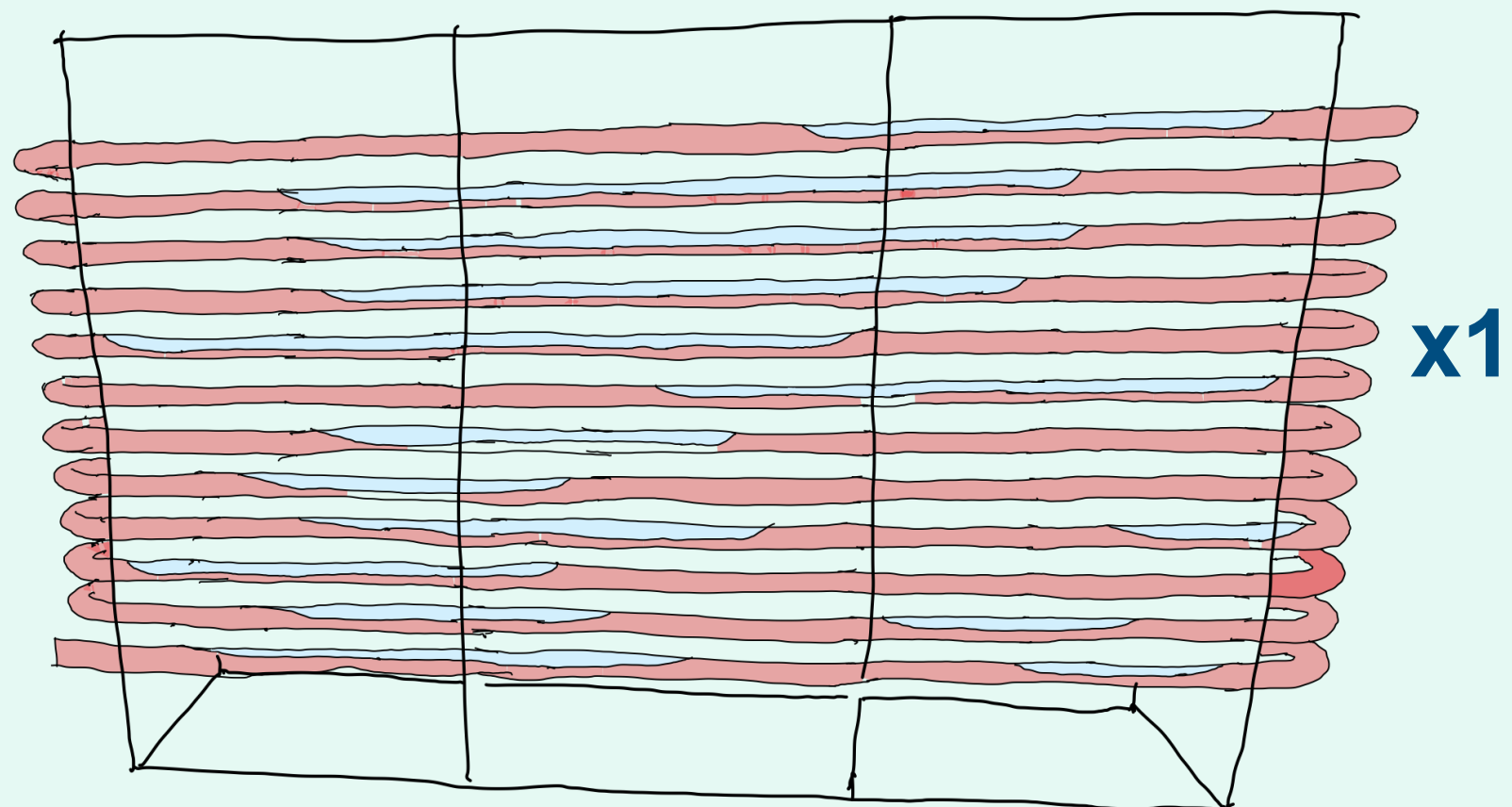
x24



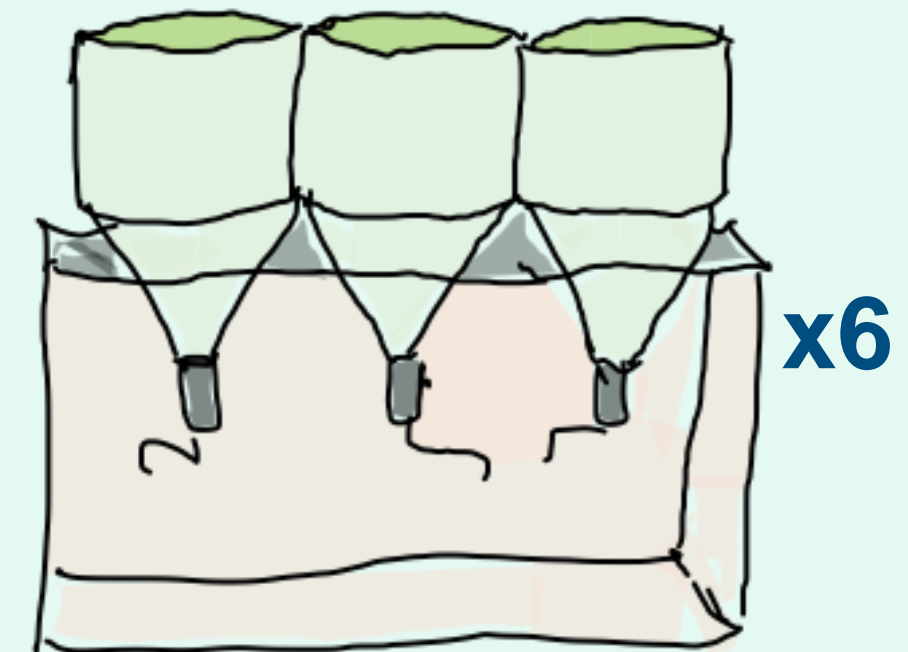
x2



x4



x1



x6